



METAL HAWK
LIMITED

AGM PRESENTATION

CRITICAL METALS FOCUS IN WA

November 2023

ASX : MHK

Summary information

This Presentation has been prepared by Metal Hawk Ltd (Metal Hawk). This document contains background information about Metal Hawk current at the date of this presentation. The presentation is in summary form and does not purport be all inclusive or complete, it does NOT contain all of the information that may be required for evaluating Metal Hawk, its assets, prospects or potential opportunities. Recipients should conduct their own investigations and perform their own analysis in order to satisfy themselves as to the accuracy and completeness of the information, statements and opinions contained in this Presentation. This Presentation is for information purposes only and is not a disclosure document for the purposes of the Corporations Act 2001 (Cth). This Presentation contains references to exploration results previously announced. Pursuant to Listing Rule 5.23.2 Metal Hawk confirms that it is not aware of any new information or data that materially affects the information included.

Not financial product advice or an offer

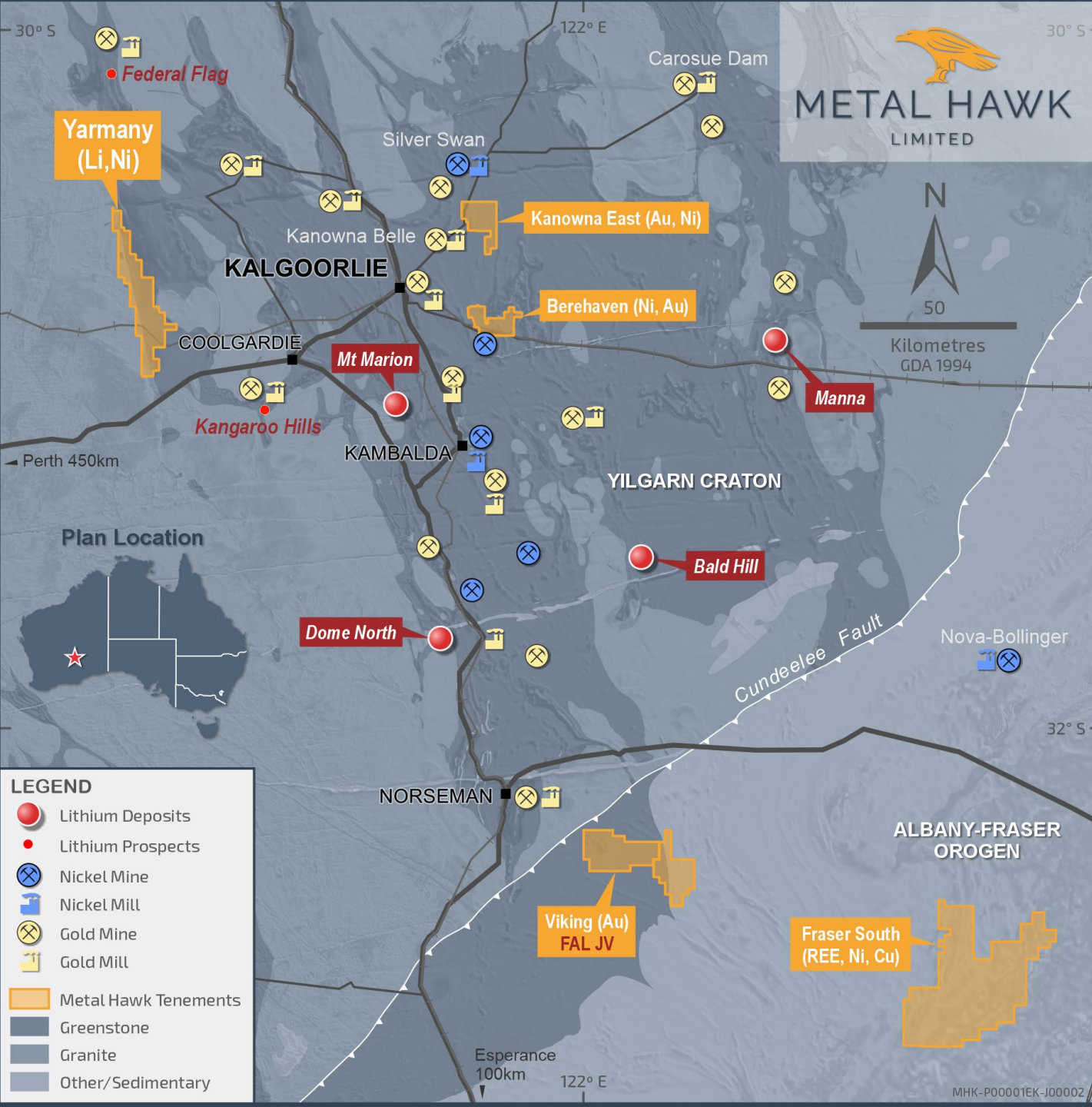
Neither this presentation nor the information contained in it constitutes an offer, invitation, solicitation or recommendation in relation to the purchase or sale of shares in any jurisdiction. This presentation does not constitute investment advice and has been prepared without taking into account the recipient's investment objectives, financial circumstances or particular needs and the opinions and recommendations in this presentation are not intended to represent recommendations of particular investments to particular persons. Recipients should seek professional advice when deciding if an investment is appropriate. All securities transactions involve risks, which include (among others) the risk of adverse or unanticipated market, financial or political developments. To the fullest extent permitted by law, Metal Hawk, its officers, employees, agents and advisers do not make any representation or warranty, express or implied, as to the currency, accuracy, reliability or completeness of any information, statements, opinions, estimates, forecasts or other representations contained in this presentation. No responsibility for any errors or omissions from this presentation arising out of negligence or otherwise is accepted.

Forward Looking Statements

This presentation may include forward-looking statements. Forward-looking statements are only predictions and are subject to risks, uncertainties and assumptions which are outside the control of Metal Hawk. Actual values, results or events may be materially different to those expressed or implied in this presentation. Given these uncertainties, recipients are cautioned not to place reliance on forward looking statements. Any forward-looking statements in this presentation speak only at the date of issue of this presentation. Subject to any continuing obligations under applicable law and the ASX Listing Rules (when applicable), Metal Hawk does not undertake any obligation to update or revise any information or any of the forward-looking statements in this presentation or any changes in events, conditions or circumstances on which any such forward looking statement is based.

Jurisdiction

This presentation may not be distributed in any jurisdiction except in accordance with the legal requirements applicable in such jurisdiction. Recipients should inform themselves of the restrictions that apply in their own jurisdiction. A failure to do so may result in a violation of securities laws in such jurisdiction.



CRITICAL METALS FOCUS IN WA

- Metal Hawk is a dedicated explorer focused on early-stage discoveries of critical metals in Western Australia
- Yarmany Project acquisition complements MHK's nickel-focused Goldfields portfolio with added Lithium potential

ASX : MHK

METAL HAWK
LIMITED



SINCE THE 2022 AGM...

- Exploration continued at Berehaven – new gold zone identified
- Acquisition of IGO's JV interest in 3 projects
- Rationalisation of MHK project portfolio – focus on critical metals
- Successful maiden drill program completed at Fraser South - identified significant REEs
- Acquisition of Yarmany Project and commencement of exploration
- New drill targets generated for Li & Ni
- MHK board changes

ASX : MHK

CAPITAL STRUCTURE	
MHK Shares on issue	79,225,557
Options on issue*	27,725,000
Cash at bank**	\$1.1m
Market Cap @ 20c (undiluted)	~\$15.8m
Enterprise Value	\$14.7m

*Options with various exercise prices and expiry dates

** As at 30 September 2023

DIRECTORS AND MANAGEMENT	
Mike Edwards	Non-Executive Chairman
Will Belbin	Managing Director
David Pennock	Executive Director

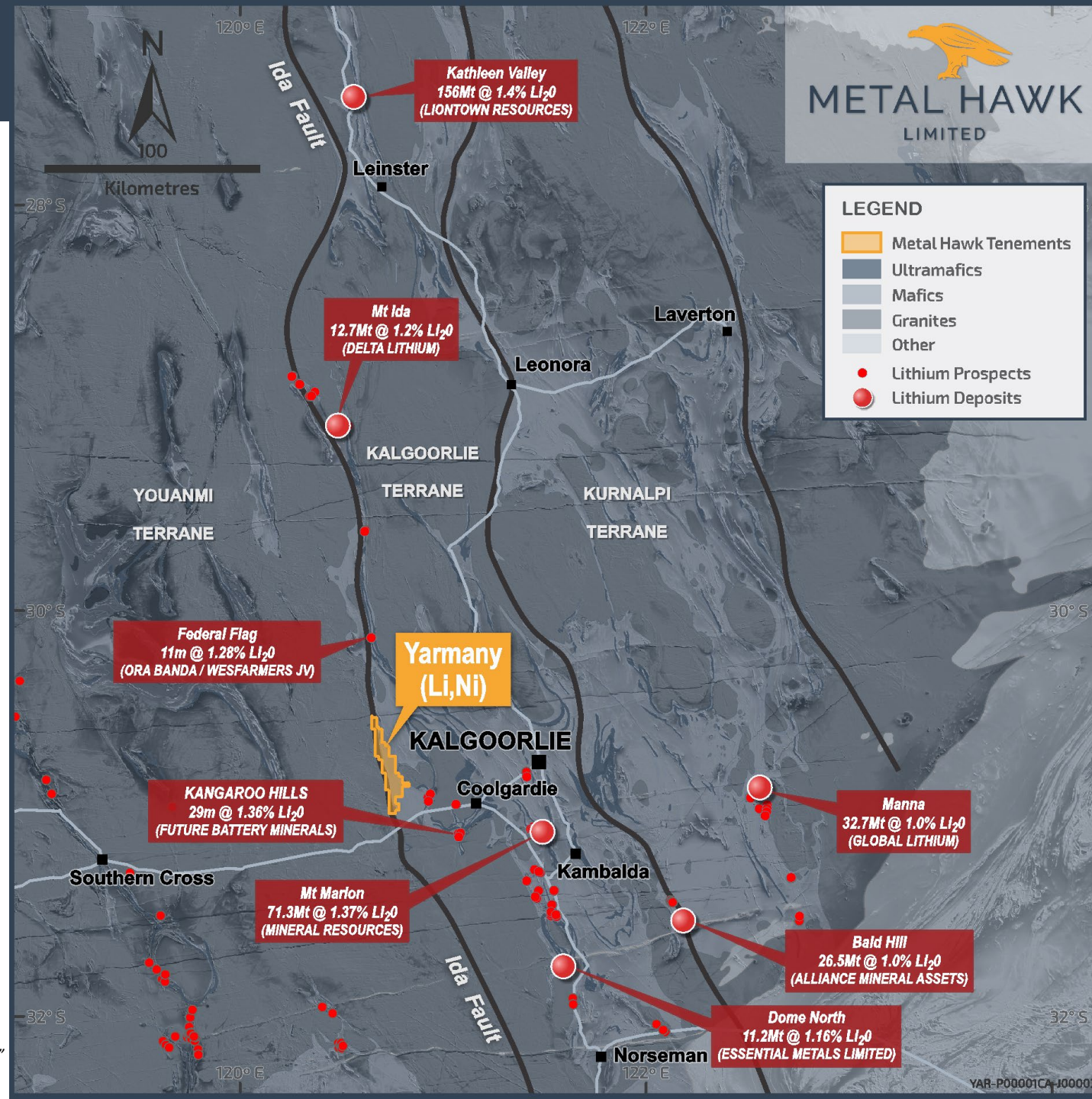
KEY CONSULTANTS	
Dr David Rawlings	Lithium Geology Consultant
Newexco Exploration Pty Ltd	Nickel Sulphide & Geophysics

MAJOR SHAREHOLDERS	
IGO Limited	6.9%
Lotaka Pty Ltd	4.8%
GKMI Pty Ltd	4.8%
D Van der Walt	4.4%
N Danda	4.1%
D Pennock*	3.9%
Newexco Group*	3.7%
W Belbin	3.0%
S Glasson*	2.7%
Pennock Pty Ltd	2.5%
Top 10	41%
Top 20	55%

* and related parties

THE YARMANY PROJECT

- Large 282km² ground position with 50km of strike along the Ida Fault
- Located within the Kalgoorlie Terrane, which hosts the most significant Lithium deposits in the Goldfields
- Lithium prospects and deposits located proximal to the Ida Fault north of Yarmany:
 - Kathleen Valley (Liontown Resources)
156Mt @ 1.4% Li ⁽¹⁾
 - Mt Ida (Delta Lithium)
14.6Mt @ 1.2% Li ⁽²⁾



¹ Liontown Resources Limited ASX release dated 11 November 2021 "Kathleen Valley DFS confirms Tier-1 global lithium project"

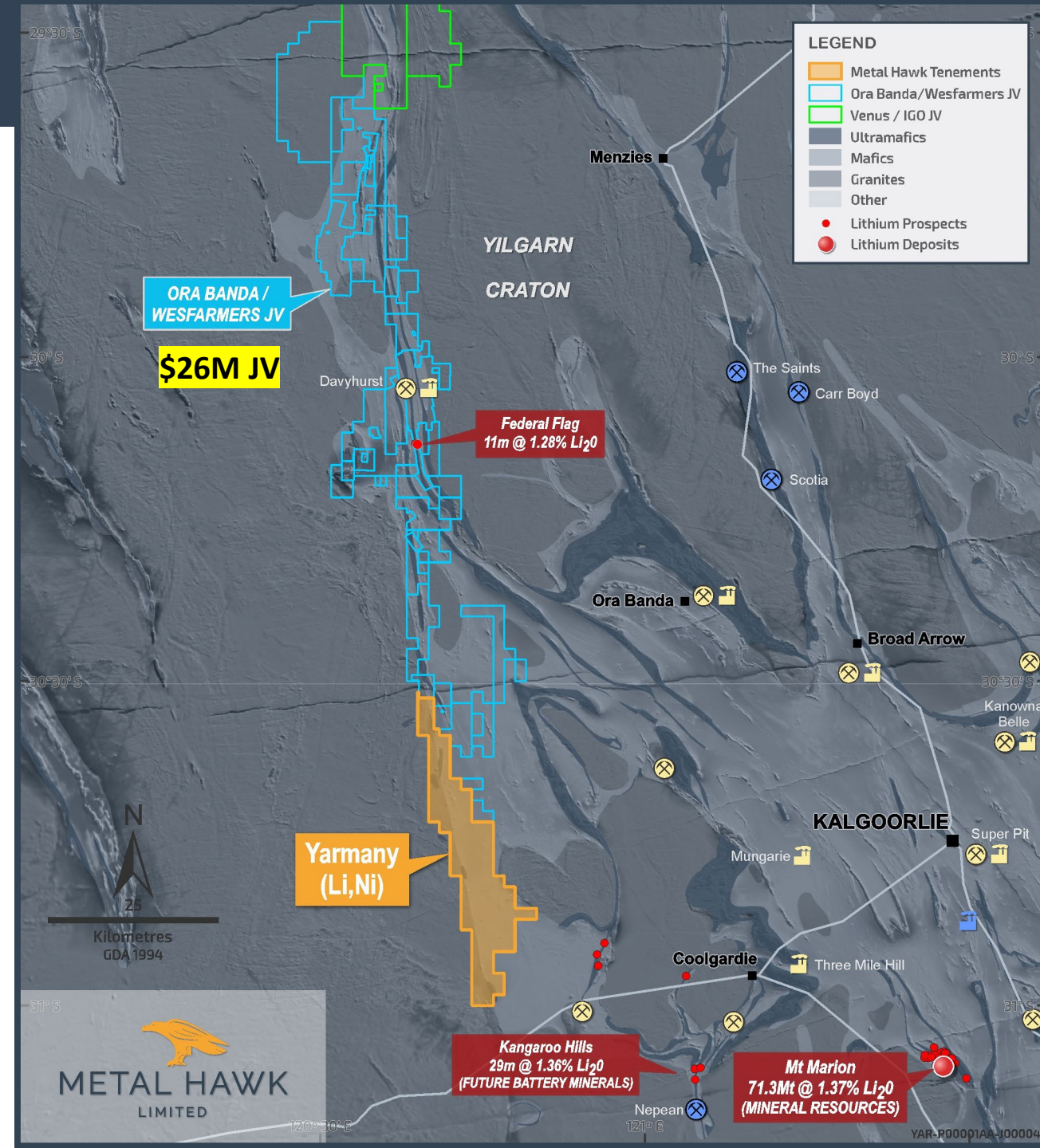
² Delta Lithium ASX release dated 3 October 2023 "Mt Ida Lithium Mineral Resource Estimate Update"

THE YARMANY PROJECT

UNDEREXPLORED BELT-SCALE POTENTIAL FOR LITHIUM AND NICKEL SULFIDE

- Option and Earn-In deal with Horizon Minerals Limited (July 23)
- \$400k Option fee (cash & shares)
- MHK to spend A\$1m within 2 years to earn 80%*
- Excellent access and secure tenure
- Big players & recent deals in the region:
 - Wesfarmers, IGO, Hancock, Rio Tinto
- Increasing Li exploration activity with significant discoveries nearby:
 - Kangaroo Hills, Federal Flag/Davyhurst

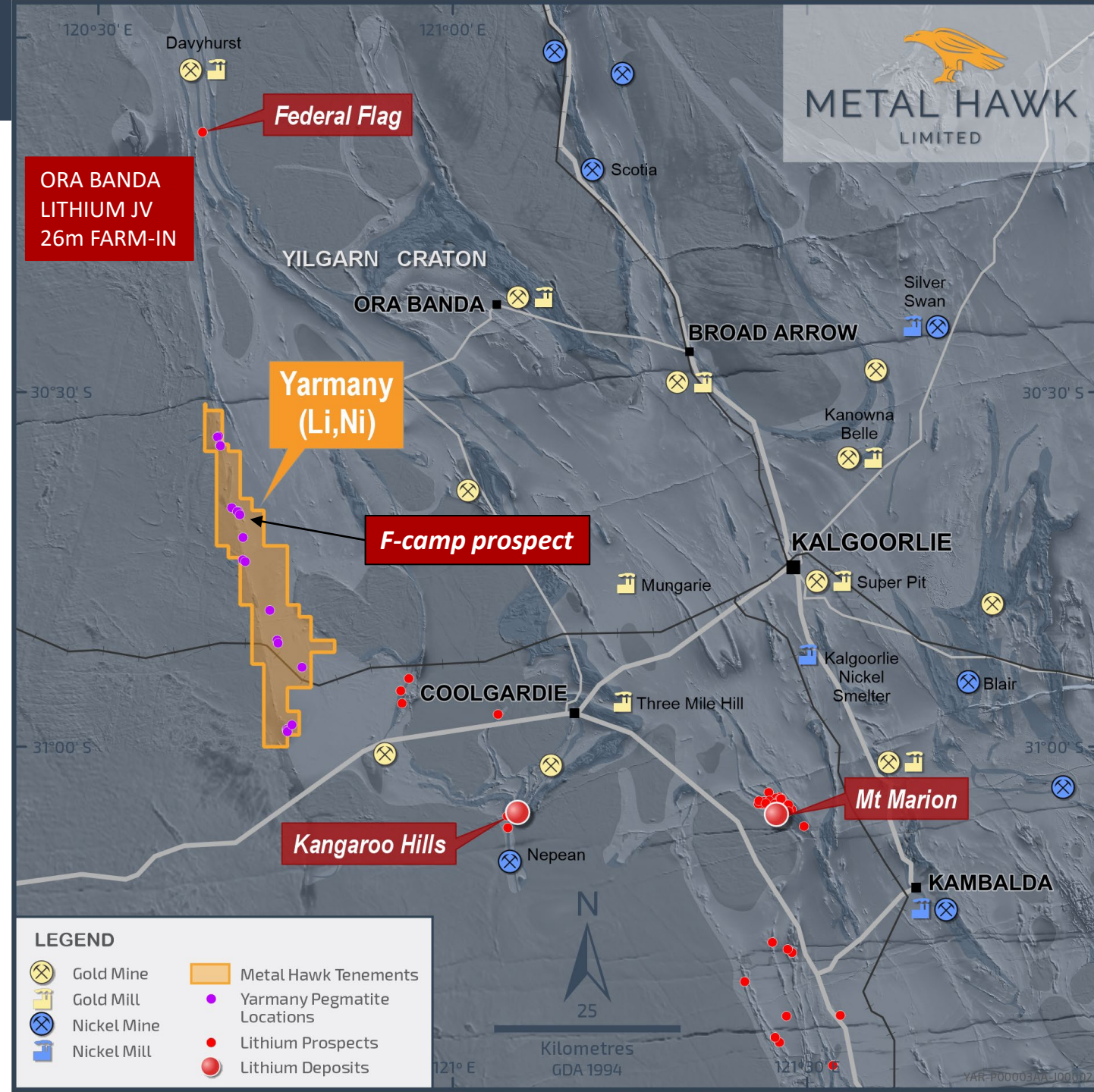
*Following the 2-year Option period, if MHK elects to exercise Option, HRZ may elect to receive \$1,000,000 worth of MHK shares or retain a free-carried 20% interest



THE YARMANY PROJECT

LITHIUM DRILL TARGETS IDENTIFIED

- Mapping and geochemical surveys highlight lithium potential over highly weathered pegmatites
- Strongest Li anomalies with elevated pathfinder geochemistry are above the largest pegmatite at F-camp
- Plans for lithium drilling at F-camp fast-tracked
- Ongoing work identifying new regional lithium drill targets
- +20 regional Li targets identified from first pass assessment



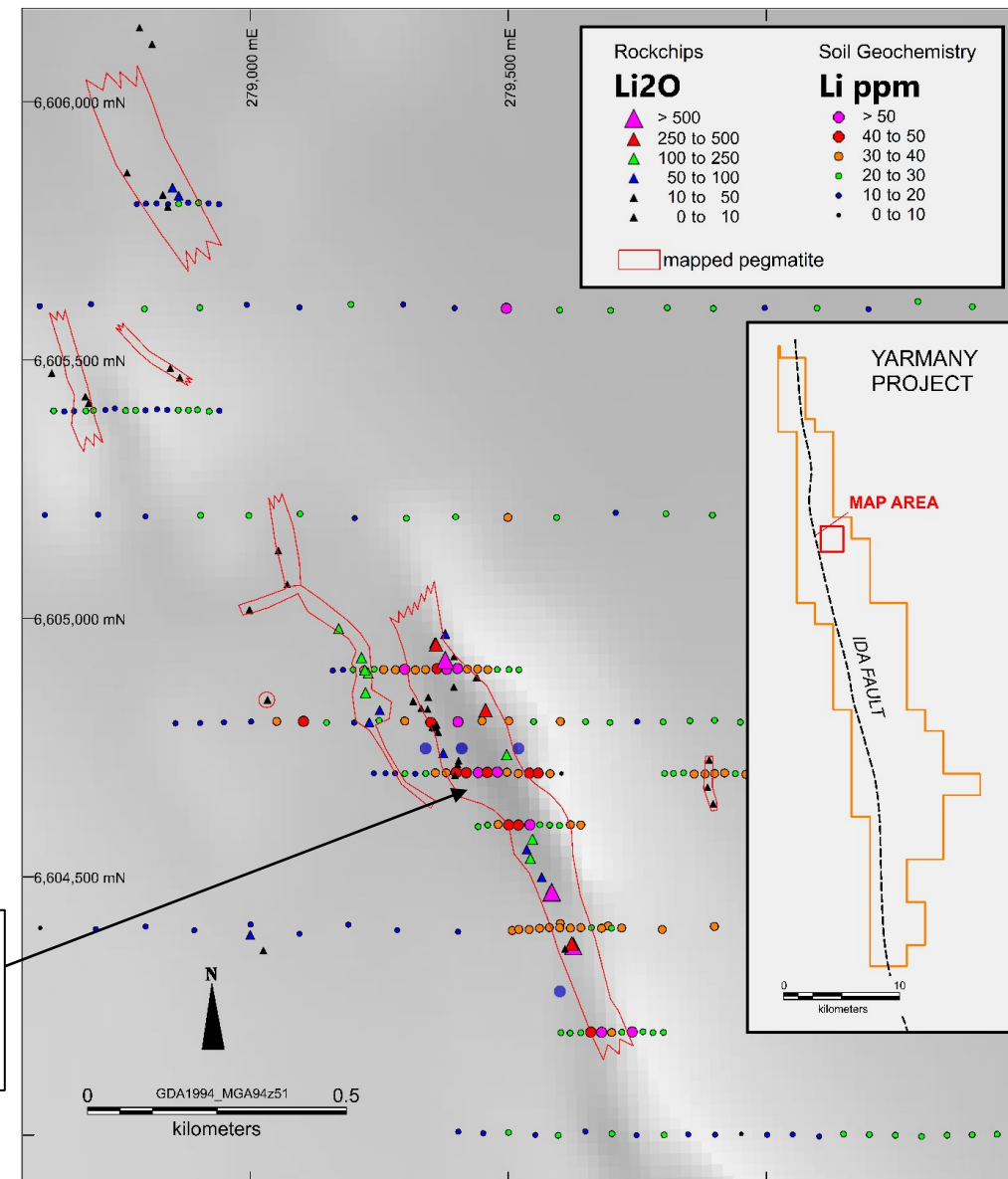
Compelling LCT pegmatite drill target at F-camp

- Swarm of highly weathered pegmatites over several km²
- Area represents a very small portion of the Yarmany Project
- Favourable pathfinder geochemistry above large mapped NW trending pegmatites at F-camp prospect
- Coincident magnetic signature
- Approvals finalised and drilling to commence shortly



MYP062 - highly weathered pegmatite grading 1,268ppm Li₂O

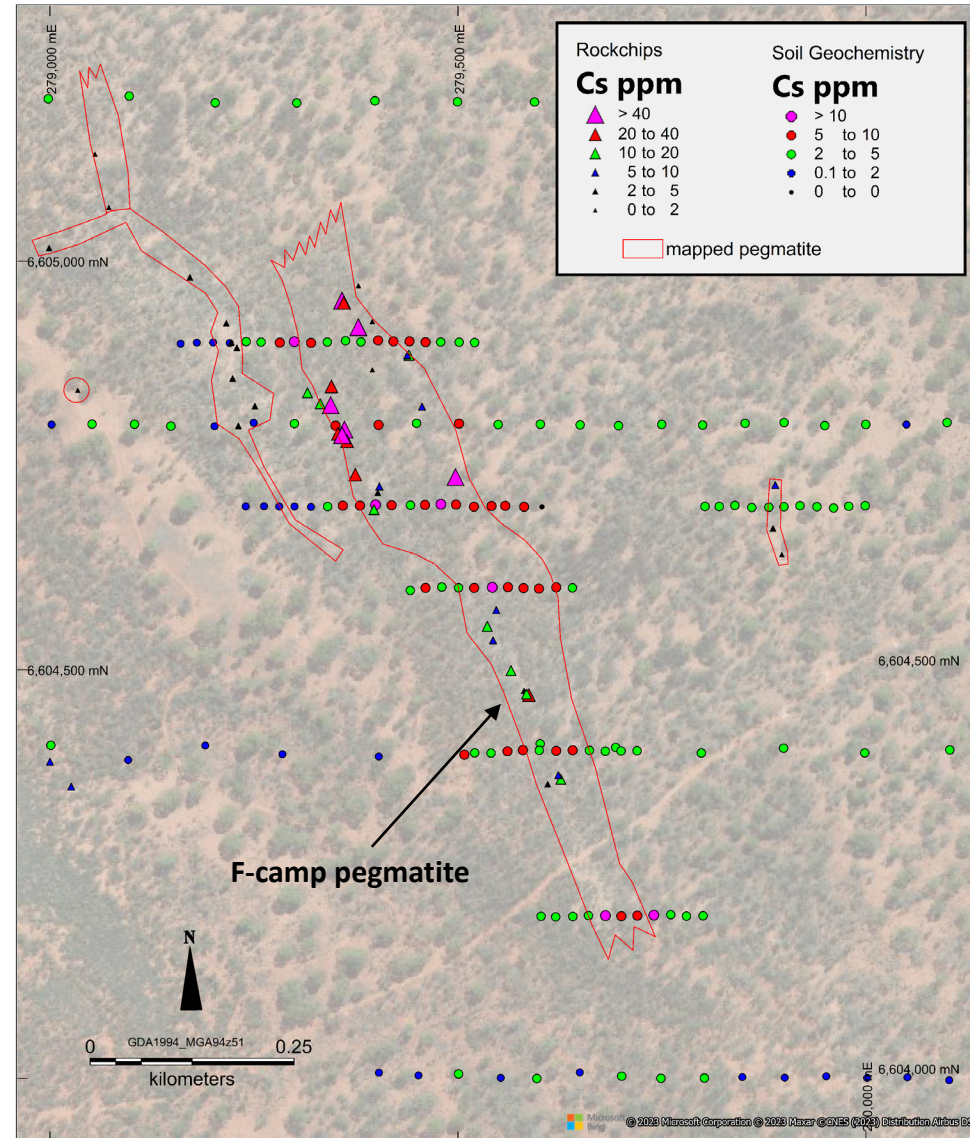
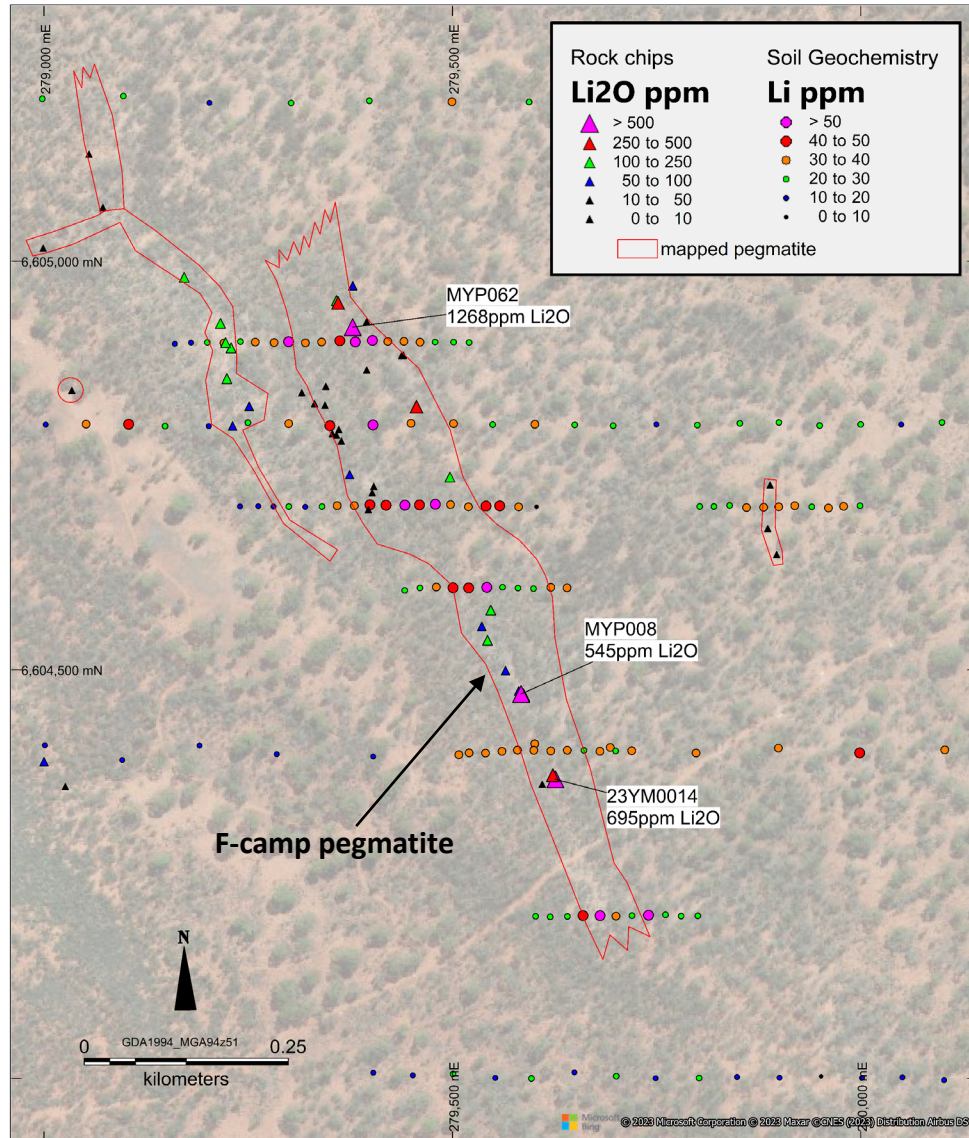
F-camp pegmatite
1km x 140m



F-camp prospect lithium geochemistry - rock chips and soils

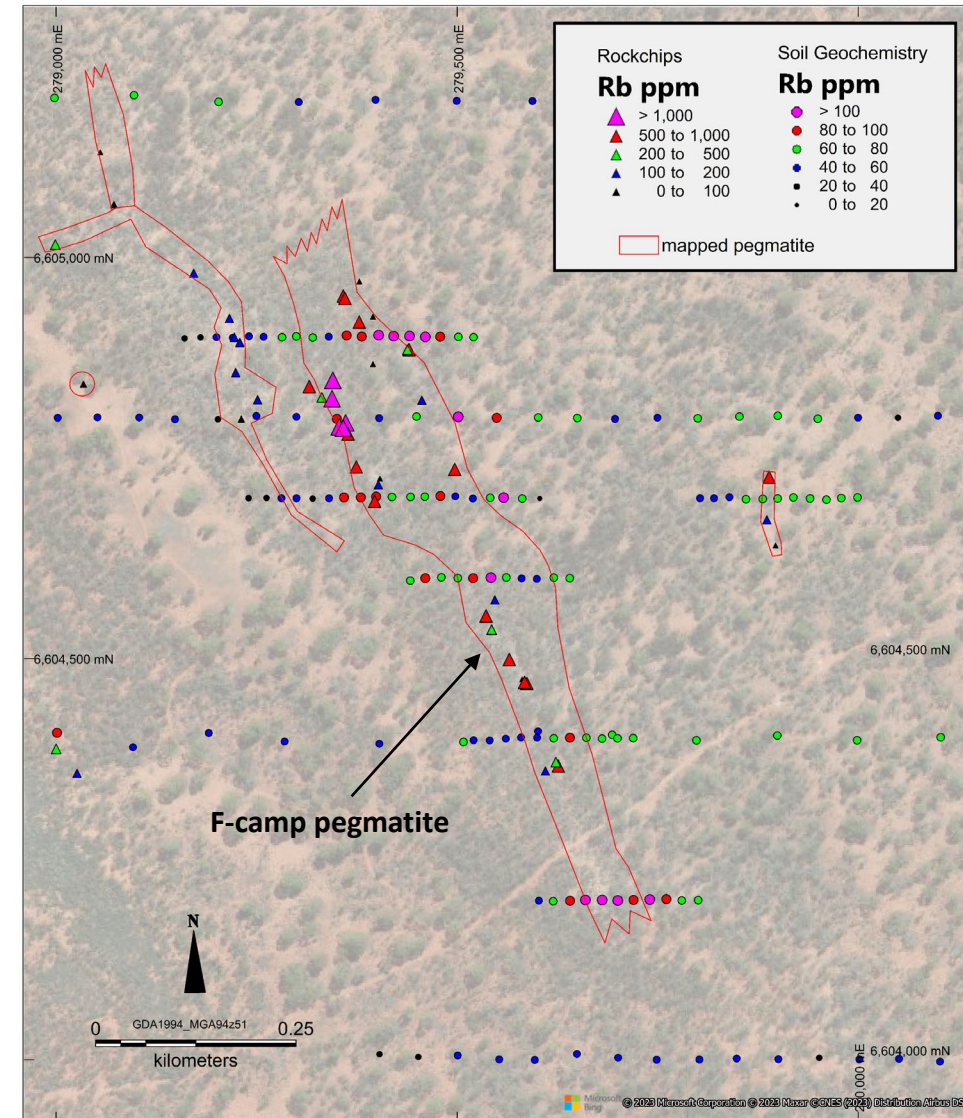
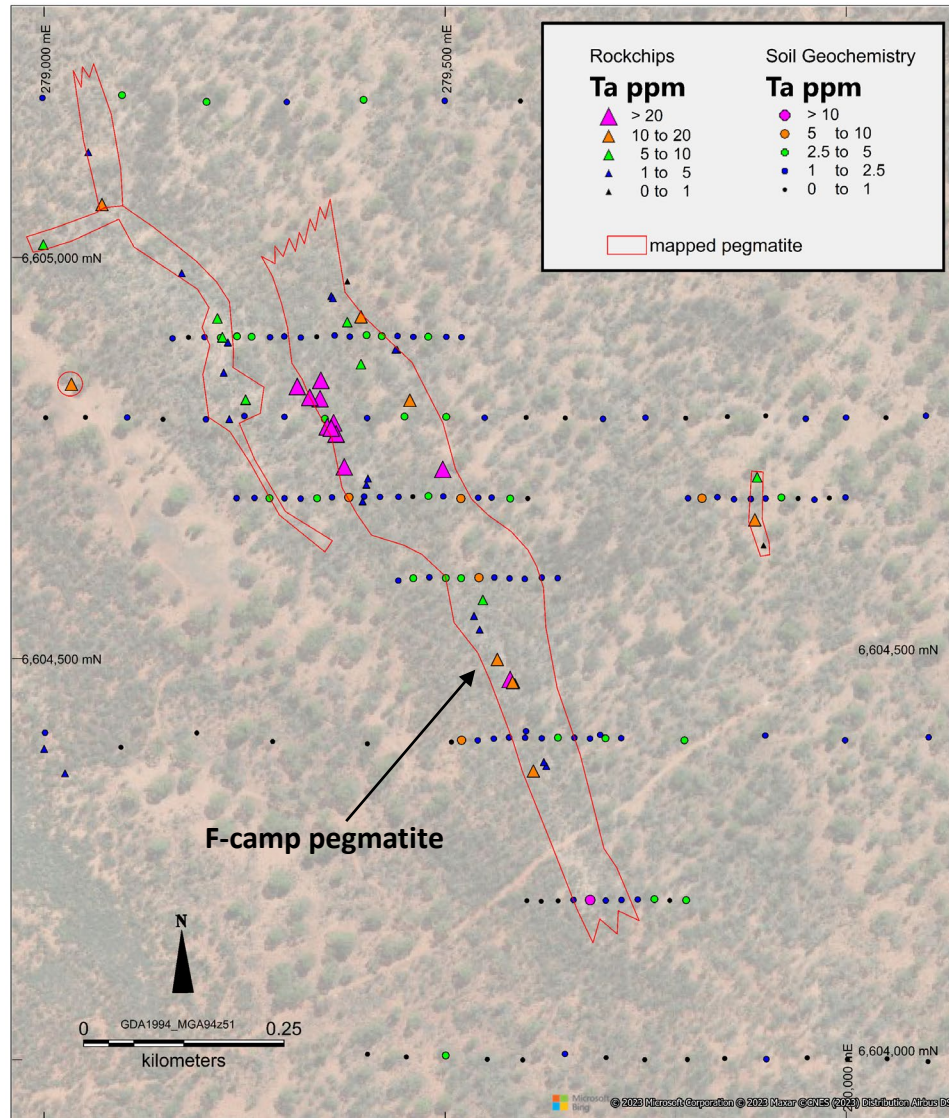
THE YARMANY PROJECT – F camp prospect

Lithium and pathfinder geochemistry over main pegmatite body indicates fertility for LCT-mineralisation



THE YARMANY PROJECT – F camp prospect

Soil and rockchip results correlate with large mapped F-camp pegmatite (1km x 140m)

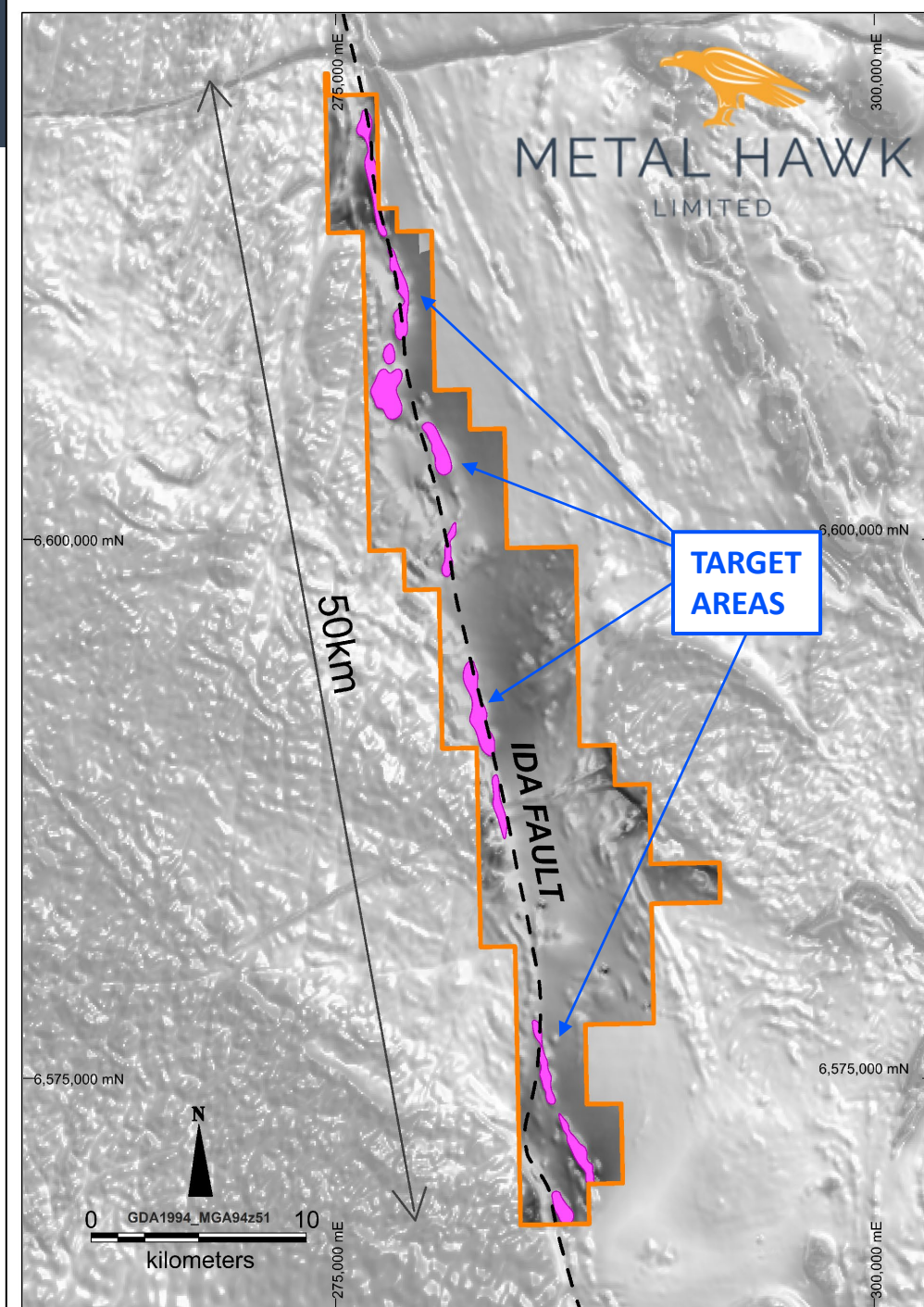


- ✓ Compelling LCT pegmatite drill target defined by geochemistry and mapping
- ✓ PoW approvals granted and Heritage Survey complete
- Maiden drilling at the F-camp prospect to commence imminently
- Initial AC drilling to define pegmatite geometry and depth of weathering
- AC will test other regional targets along the F-camp trend
- Deeper RC will follow, testing the main F-camp pegmatite for fresh spodumene mineralisation
- Ongoing work to refine new regional lithium drill targets for 2024

THE YARMANY PROJECT - NICKEL

NICKEL SULPHIDE DISCOVERY OPPORTUNITY

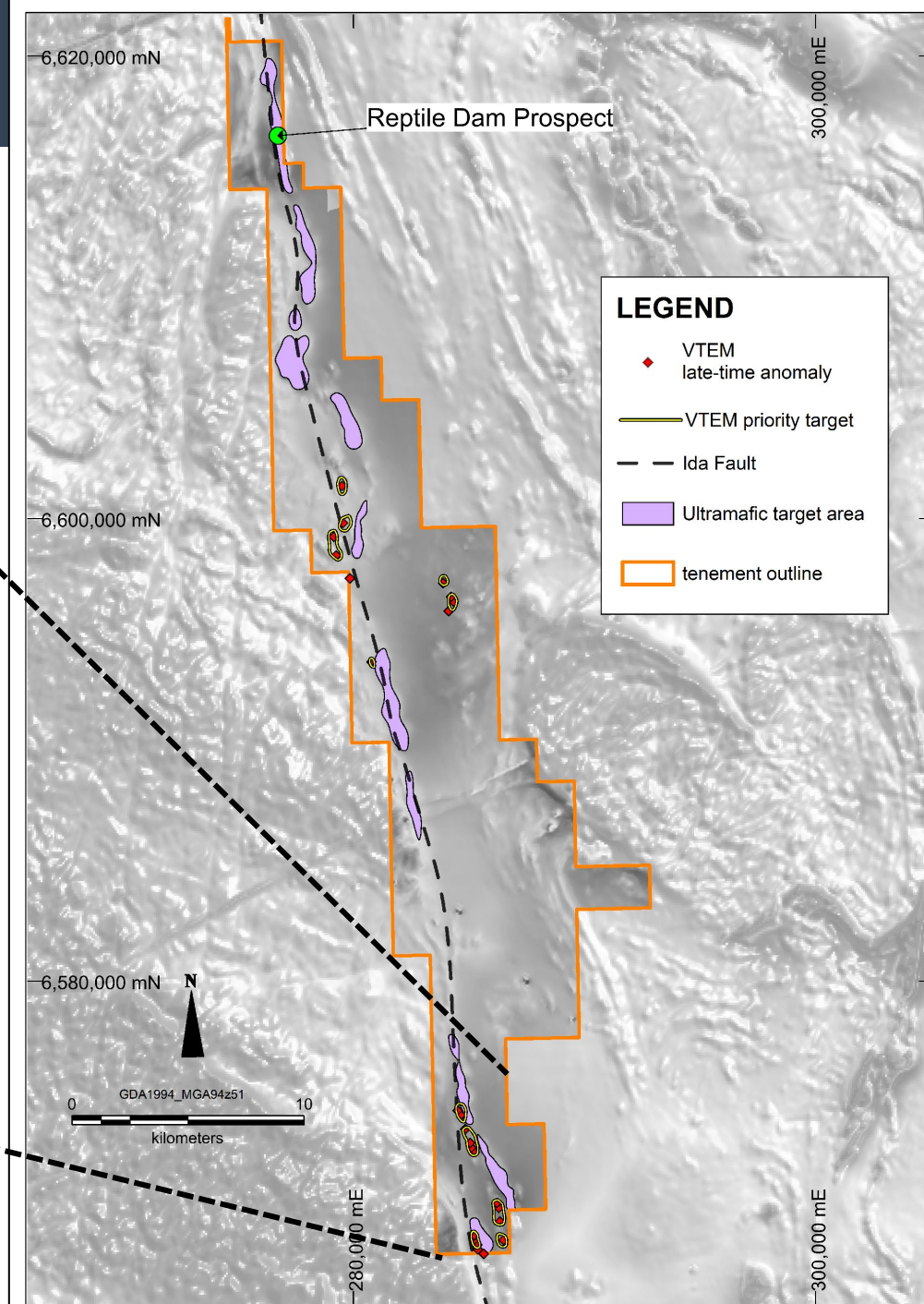
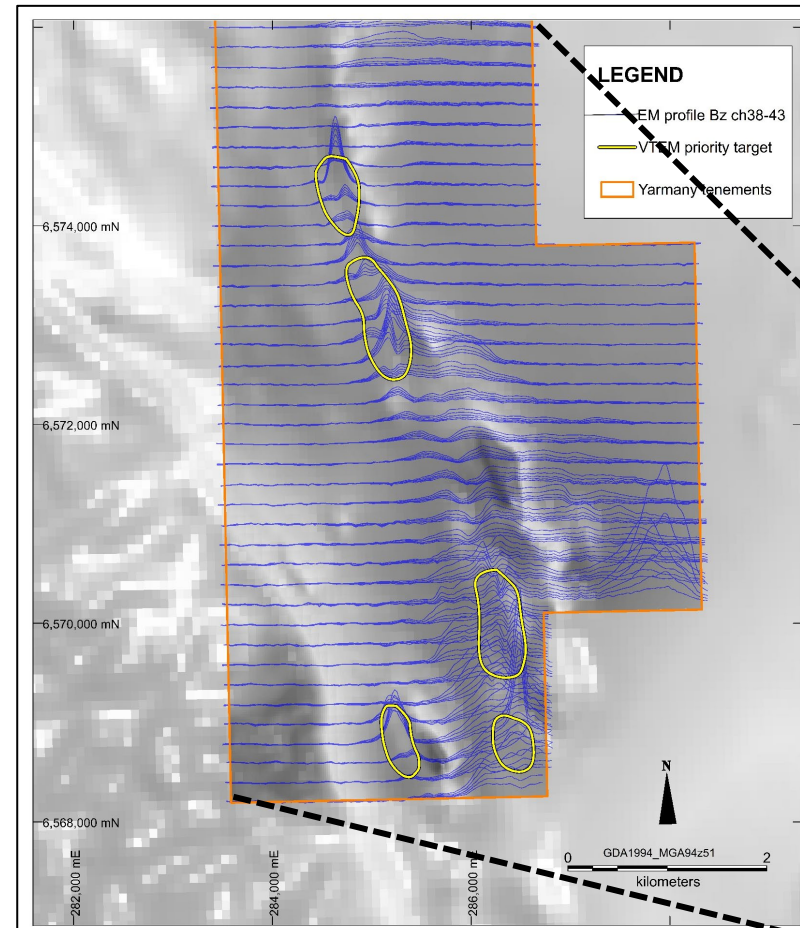
- Targeting high-grade Kambalda-style komatiite-hosted nickel sulphide deposits
- Extensive target zone along the Ida Fault
- Underexplored ultramafic target areas to be tested with simple and systematic modern exploration
- No previous EM carried out on tenements
- Margins of ultramafic units also present as high priority targets for LCT pegmatite deposits
- Airborne EM (VTEM) survey has identified numerous late-time conductors which will be tested in coming months



THE YARMANY PROJECT - NICKEL

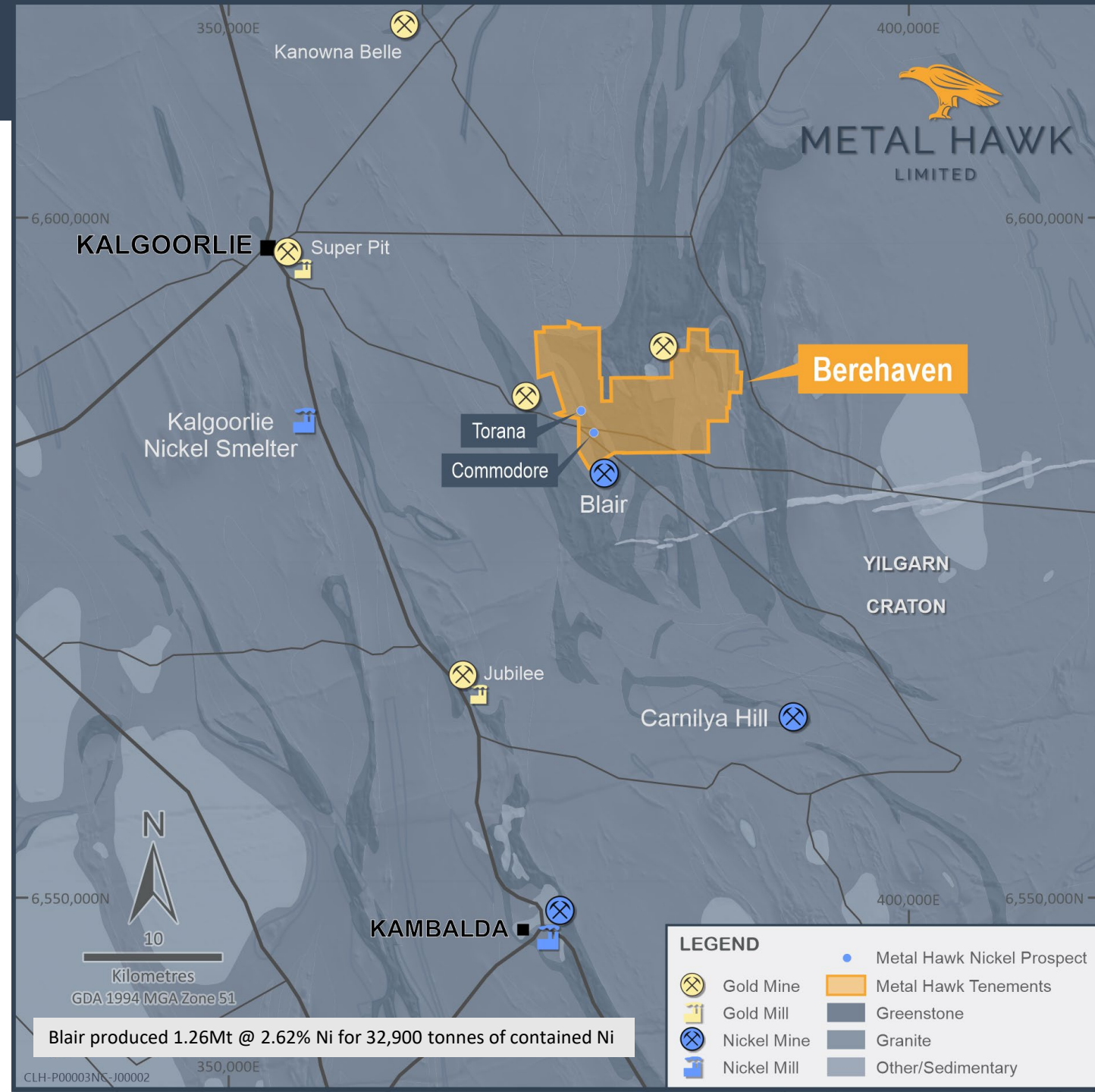
PRIORITY VTEM TARGETS

- 11 bedrock conductors identified
- Priority southern conductors favourably situated on ultramafic rock margins
- Preparations underway for drilling in early 2024



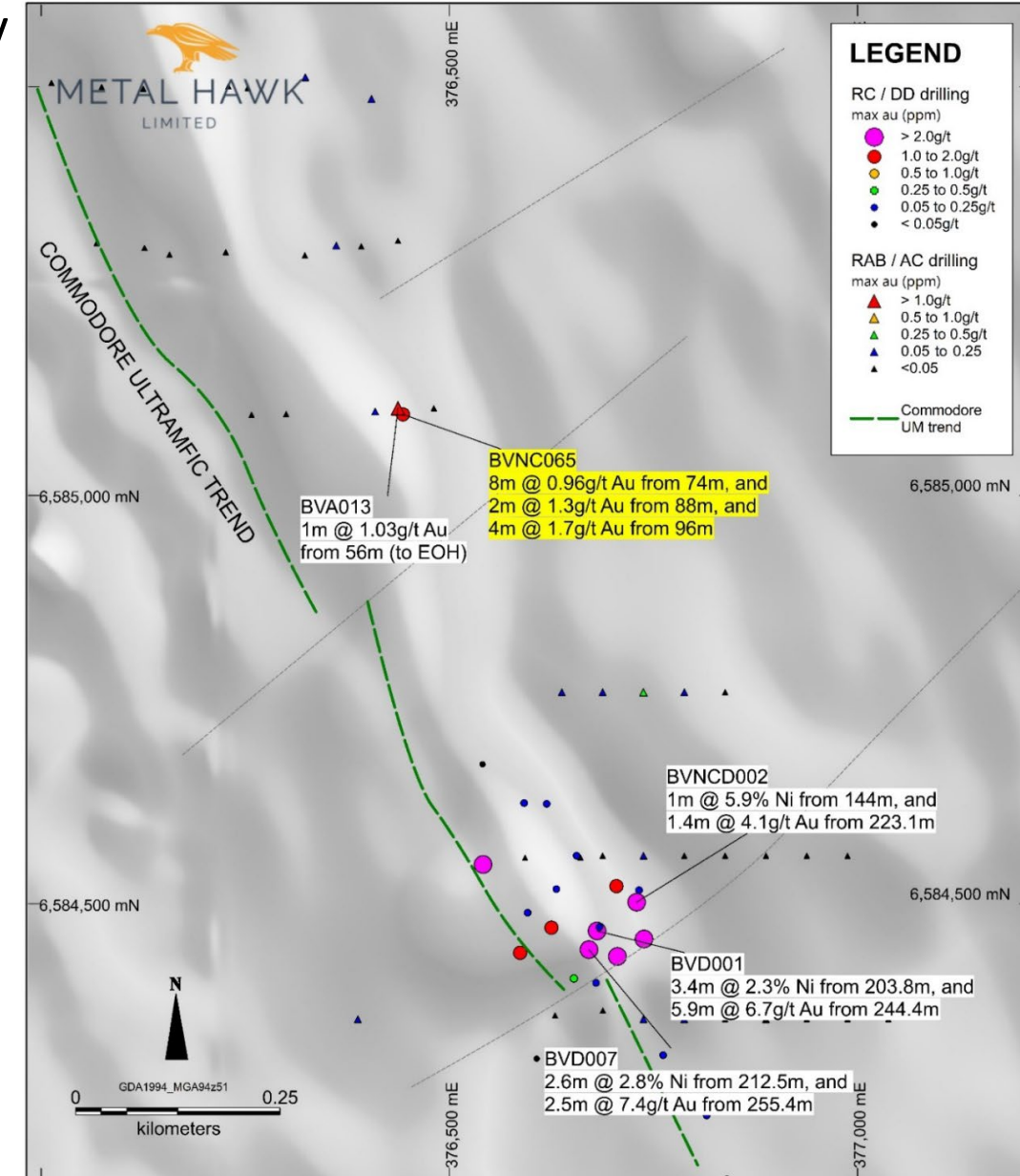
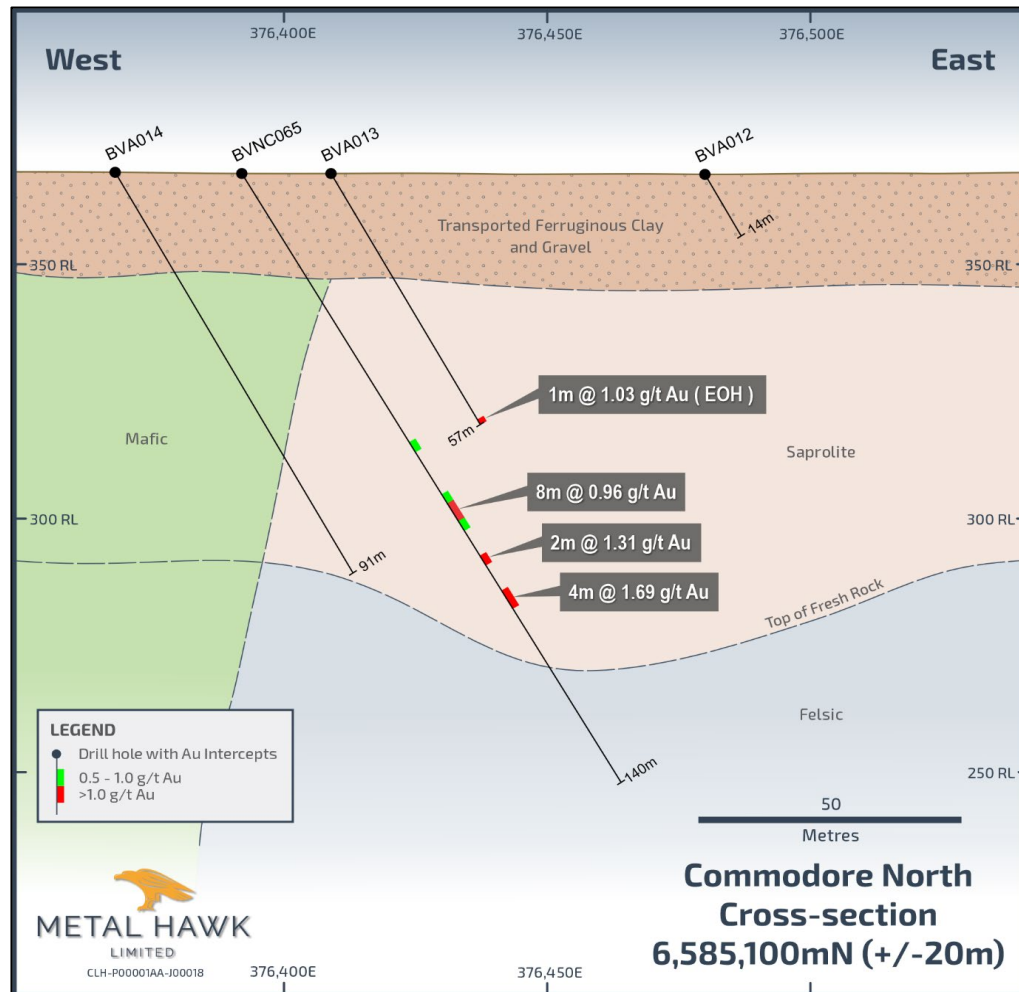
THE BEREHAVEN PROJECT

- Consolidated tenure (>90km²) north of Blair Nickel Mine
- 10km strike potential of fertile ultramafic rocks
- Nickel sulphide discovery at Commodore validates geology model and project potential:
 - 1m @ 5.9% Ni from 144m
 - 3.4m @ 2.3% Ni from 203.8m
 - 2.6m @ 2.8% Ni from 212.6m
- Untested nickel and gold targets
- Additional Ni drilling planned north of Torana



New gold zone north of Commodore

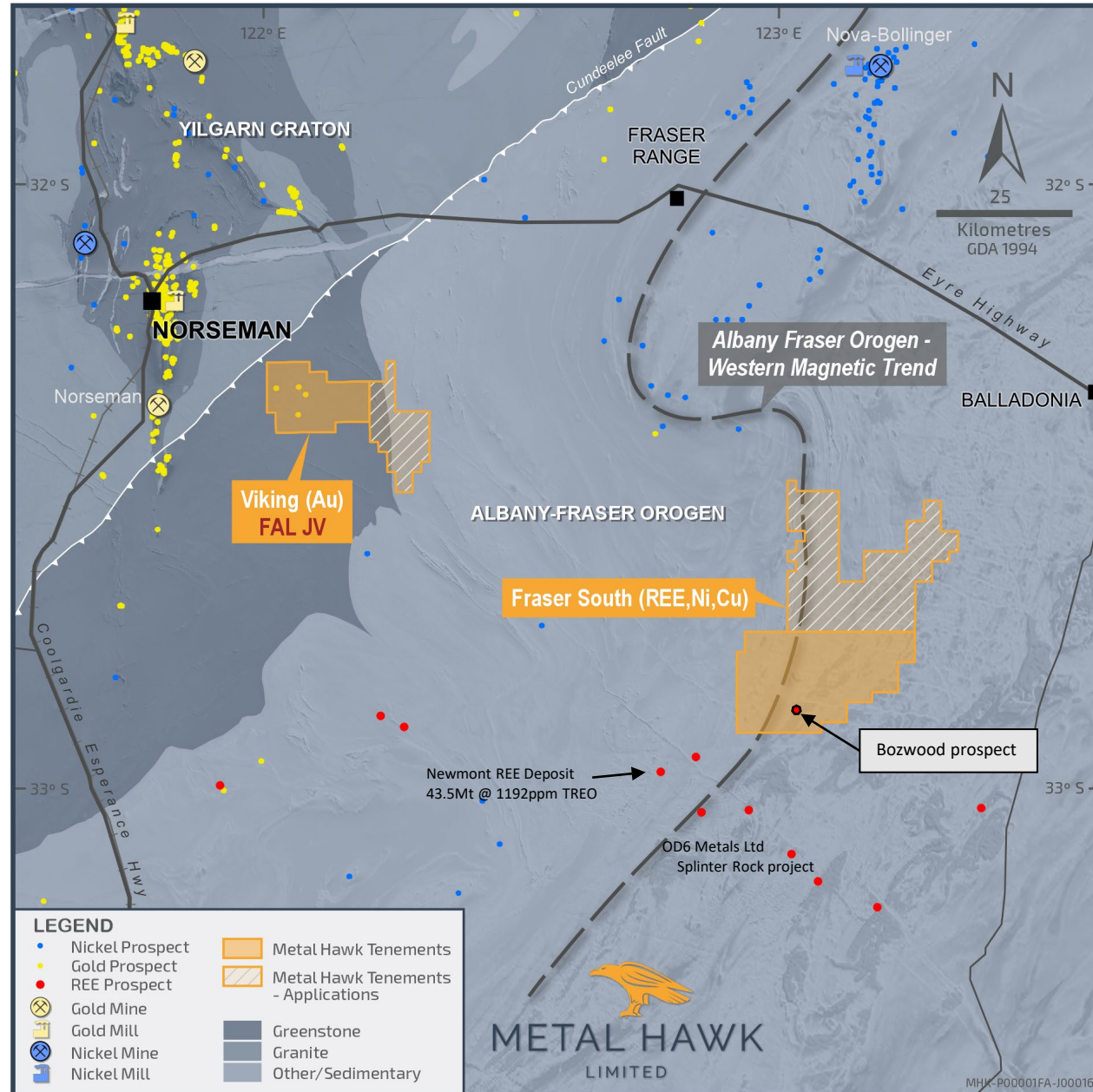
- **BVNC065** (Mar 23) tested EOH 1.0g/t Au aircore anomaly
- Multiple zones of significant gold intersected
- Follow-up RC drilling warranted



Fraser South Project (REE, Ni-Cu)

UNTESTED BELT-SCALE POTENTIAL

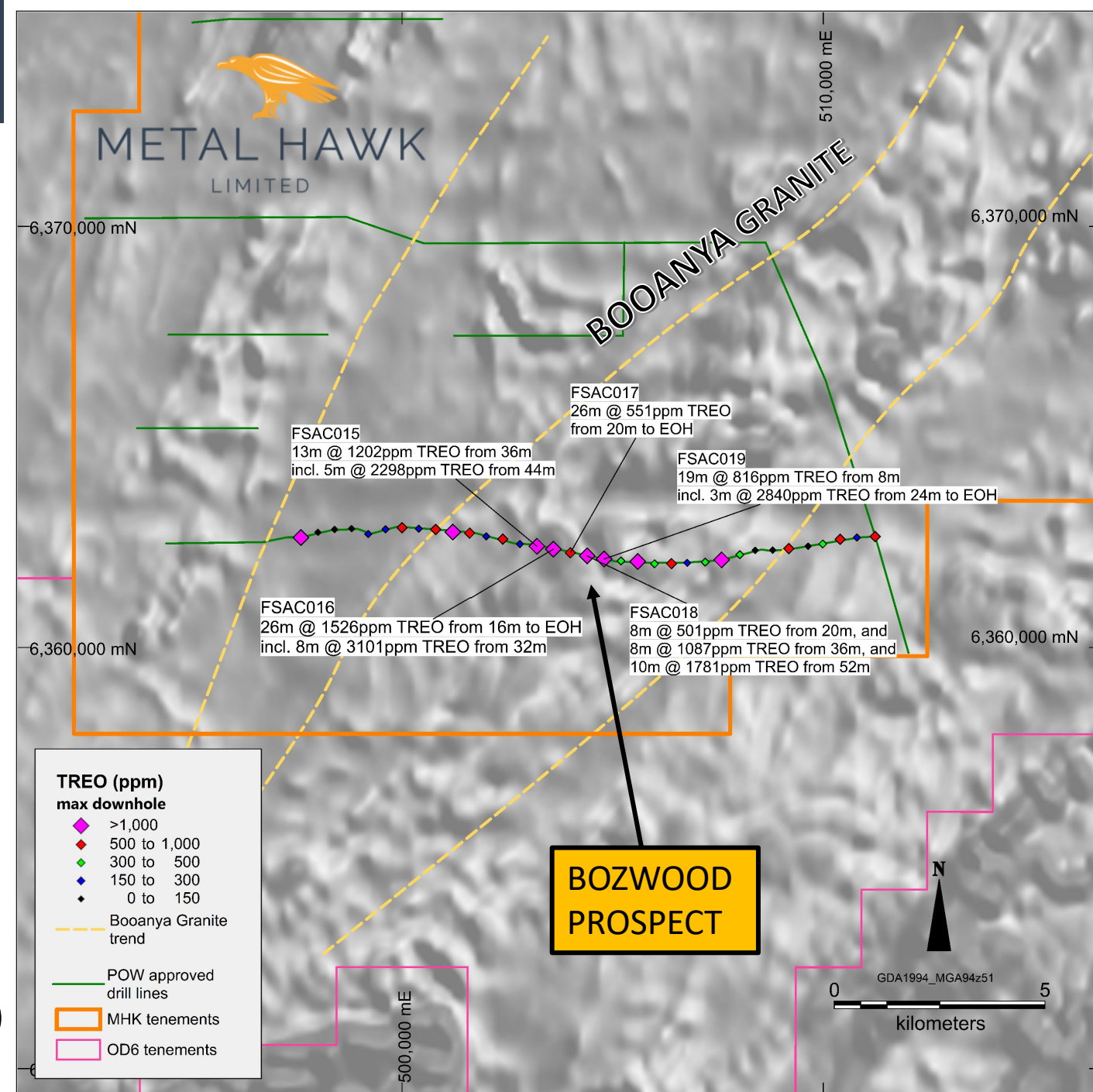
- 100% owned tenure
(following 51% acquisition from IGO)
- Structural extension of Albany-Fraser Belt
- Belt-scale opportunity with consolidated tenure (> 980km²)
- MHK targeting REE and Ni-Cu sulphides under shallow cover
- Weathering of granite forms extensive zones of REE enriched clay/saprolite
- New REE discoveries in an emerging region
- Successful maiden drill campaign intersects thick and wide REE enrichment in saprolite



Fraser South Project (REE, Ni-Cu)

MAIDEN DRILLING RESULTS

- 2km wide high-grade zone over 5 consecutive 400m spaced AC holes
- Several holes ended in mineralisation
- High-grade REEs at **Bozwood** prospect:
 - 26m @ 1526ppm TREO from 16m to EOH,
incl. 8m @ 3101ppm TREO from 32m
 - 13m @ 1202ppm TREO from 36m,
incl. 5m @ 2298ppm TREO from 44m
 - 8m @ 1087ppm TREO from 36m, and
10m @ 1781ppm TREO from 52m
 - 19m @ 816ppm TREO from 8m to EOH
incl. 3m @ 2840ppm TREO from 24m to EOH
- Stage-2 AC drilling completed (assays pending)



INVESTMENT SUMMARY

LEVERAGED TO EXPLORATION SUCCESS



- ✓ Underexplored quality greenfields projects in WA
- ✓ Yarmany Project adds Lithium to regional discovery portfolio
- ✓ Maiden lithium drilling program to commence imminently
- ✓ Strong pipeline of activity
- ✓ Tightly held with ~79m shares on issue
- ✓ ~\$16m market cap



METAL HAWK

LIMITED

www.metalhawk.com.au